



Excelbis Labs  
1920 E Warner Avenue  
Santa Ana, CA 92705

(714) 340-7099  
<http://excelbislabs.com>  
Lic# C8-0000059-LIC

QA Testing

1 of 1

## Tropicana Cherry

Sample ID: 2401EXL0075.0434

Strain: Tropicana Cherry

Matrix: Plant

Type: Flower - Cured

Sample Size: ; Batch:

Produced:

Collected: 01/10/2024

Received: 01/10/2024

Completed: 01/12/2024

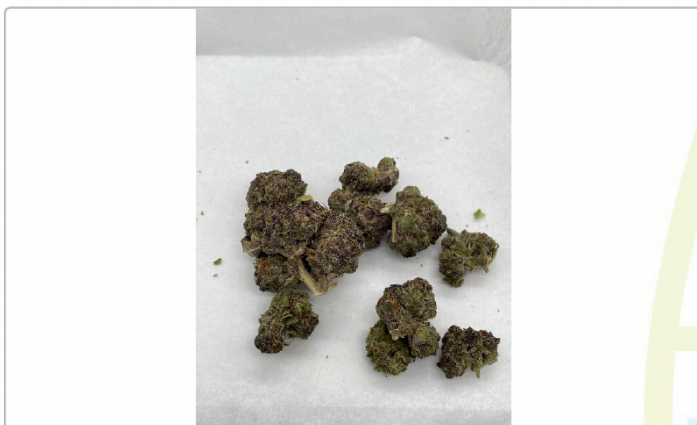
Batch#:

Client

HSM

N/A

N/A, CA 92705



### Summary

Test

Batch

Cannabinoids

Moisture

Date Tested

01/12/2024

01/12/2024

Result

Complete

Complete

13.7% - Complete

### Cannabinoids

Complete

28.689%

Total THC

0.913%

Total CBD

30.879%

Total Cannabinoids

Analyte	LOD	LOQ	Result	Result
	mg/g	mg/g	%	mg/g
CBC	0.125	0.250	0.1072	1.072
CBD	0.125	0.250	0.6724	6.724
CBDa	0.125	0.250	0.2741	2.741
CBDV	0.125	1.000	ND	ND
CBDVa	0.257	0.780	ND	ND
CBG	0.125	0.500	1.1190	11.190
CBGa	0.125	0.250	ND	ND
CBN	0.125	0.250	ND	ND
$\Delta^8$ -THC	0.125	0.500	ND	ND
$\Delta^9$ -THC	0.125	0.500	0.2282	2.282
THCa	0.250	0.500	32.4525	324.525
THCV	0.250	0.500	0.0513	0.513
Total THC			28.689	286.890
Total CBD			0.913	9.128
Total CBG			1.119	11.190
Total			30.879	308.793

Date Tested: 01/12/2024

Total THC = THCa \* 0.877 +  $\Delta^9$ -THC; Total CBD = CBDa \* 0.877 + CBD; Total CBG = CBGa \* 0.877 + CBG.

Total Cannabinoids = Total THC + Total CBD + Total CBG + minor cannabinoids.

Cannabinoids: HPLC, CAN-SOP-001

Water Activity: Water Activity Meter, WA-SOP-001

Moisture Content: Moisture Analyzer, MO-SOP-001

Foreign Matter: Visual Inspection, FM-SOP-001



*Dr. Jerry White PhD* *Bryan Zahakaylo*

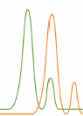
Jerry White, PhD  
Chief Scientific Officer  
01/12/2024

Bryan Zahakaylo  
Analyst  
01/12/2024

Confident LIMS  
All Rights Reserved  
[coa.support@confidentlims.com](mailto:coa.support@confidentlims.com)  
(866) 506-5866  
[www.confidentlims.com](http://www.confidentlims.com)



ND = Not Detected, NR = Not Reported, LOD = Limit of Detection, LOQ = Limit of Quantitation. This product has been tested by Excelbis Labs LLC using valid testing methodologies and a quality system as required by state law. All LQC samples were performed and met the prescribed acceptance criteria in 16 CCR section 5730, pursuant to 16 CCR section 5726(e)(13). Values reported relate only to the product tested. Excelbis Labs LLC makes no claims as to the efficacy, safety or other risks associated with any detected or non-detected levels of any compounds reported herein. This Certificate shall not be reproduced except in full, without the written approval of Excelbis Labs LLC.



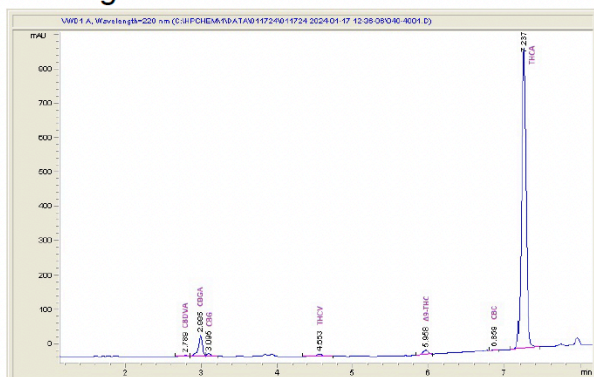
Biscotti

Sample Submitted: 01-17-2024; Report Date: 01-23-2024

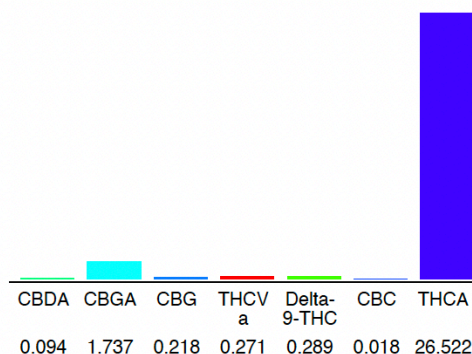
## Biscotti

Plant Material: Hemp Flower

### Chromatogram



### Cannabinoid Profile



### Cannabinoid Profile by HPLC

0.29%

Delta-9-THC

0.00%

CBD

29.15%

Total Cannabinoids

Cannabinoid	% wt	mg/g
CBDA	0.094	0.94
CBGA	1.737	17.37
CBG	0.218	2.18
THCVa	0.271	2.71
Delta-9-THC	0.289	2.89
CBC	0.018	0.18
THCA	26.52	265.22
<b>Total Cannabinoids</b>	<b>29.15</b>	<b>291.5</b>
<b>Calculated Total THC</b>	<b>23.55</b>	<b>235.49</b>
<b>Calculated CBD Yield</b>	<b>0.08</b>	<b>0.82</b>

Calculated Total THC = Delta-9-THC + 0.877 \* THCA

Calculated Maximum CBD Yield = CBD + 0.877 \* CBDA

**Marin Analytics, LLC**250 Bel Marin Keys Blvd, Suite D4  
Novato, CA 94949

833-321-TEST / info@marinanalytics.com

**Mike Clemmons**  
Lab Manager

This sample has been tested by Marin Analytics, LLC using valid testing methodologies and a quality system. Values reported relate only to the sample tested. Marin Analytics, LLC makes no claims as to the efficacy, safety, or other risks associated with any detected or non-detected levels of any compounds reported herein. This Certificate shall not be reproduced except in full without the written approval of Marin Analytics, LLC. Copyright 2023 Marin Analytics, LLC All Rights Reserved.